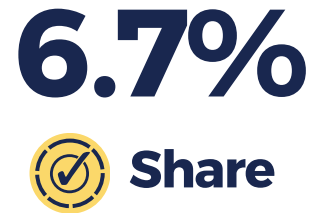
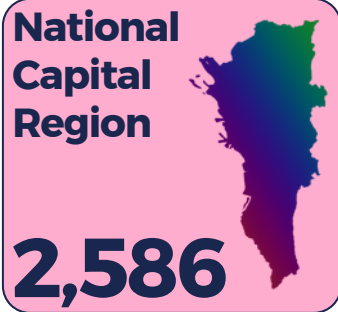


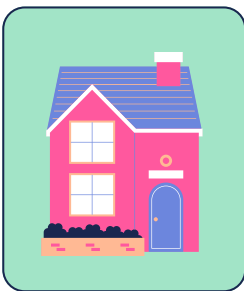
PRIVATE BUILDING CONSTRUCTION STATISTICS

Approved Building Permits



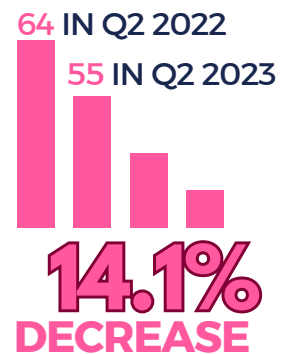
Construction Project by Type of Building

RESIDENTIAL



- 45** Single
- 9** Apartment/Accessoria
- 1** Duplex/Quadruplex

0.3B Aggregate Value



NON-RESIDENTIAL

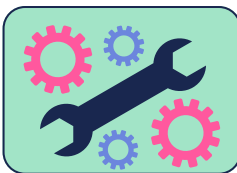


- 1** Industrial
- 1** Institutional
- 10** Commercial

0.1B Aggregate Value



ALTERATION AND REPAIR



94.4%



SOURCE: PRIVATE CONSTRUCTION STATISTICS, INDUSTRY STATISTICS DIVISION, PSA